

Designed by Bonderup & Thorup

## PRODUCT



## COLOURS



// Brass



// Chrome



// Copper

Item no.: 004-013XX

- + style code
- 39: Brass
- 40: Chrome
- 46: Copper

## DESCRIPTION

Semi is a unique pendant lamp, based on two quarter-circles put together, back-to-back. It's distinctive arch-shaped shade in lacquered, spun metal creates a diffused, cone-shaped light, ideal over a dining table or kitchen work surface.

## VERSION - SEMI PENDANT Ø30 / SM1

Colour codes are indicative.

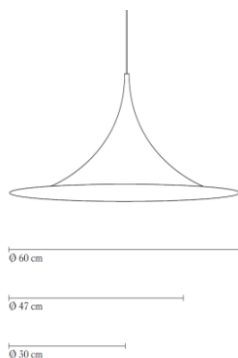
- Fabric wire - Black:
- Brass / White inside // Brass / RAL 9003 // Gloss level shiny / Gloss level 10
- Chrome / White inside // Chrome / RAL 9003 // Gloss level shiny / Gloss level 10
- Copper / White inside // Copper / RAL 9003 // Gloss level shiny / Gloss level 10

## PENDANT VERSION

Order item - look for part number in the pricelist.

Series contains the following:

**SM1, SM2, SM3**



## ACCESSORIES

SILVER CROWN REFLECTOR BULB / HALF MIRROR BULB:

Item no.: 004-99012 40W, E14 base - box of 10 pcs.

## FACTS

### MEASUREMENT - L X W X H MM

- Lamp canopy height: 2,2 inches
- Lamp canopy diameter: 4,5 inches
- Shade height: 5,9 inches
- Shade diameter: dia. 11,8 inches
- Cable length, exposed: APP. 86,6 inches
- Cable length, total: APP. 98,4 inches

### WEIGHT ITEM - LAMP INCL. WIRE AND CANOPY

1,5 lb

### PACKAGING TYPE

Cardboard box

### PACKAGING MEASUREMENT - L X W X H inches

L:13 X W:13 X H:7,9 inches

### WEIGHT PACKAGING - MATERIAL TYPE (recycleable)

- Delivery note: 0,2 oz
- PE-LD PolyEthylen, bottom and top: 1,5 oz
- Socket protection: 0,4 oz
- Brown paper post (2 pcs. Triangles and canopy box): 7,3 oz
- PE polybag: 2,2 oz
- Cardboard, outer white box w/5ply Corrugated: 2,1 lb
- Screws: 0,25 oz

### WEIGHT PACKAGING - TOTAL

2,8 lb

### NUMBER OF PARCELS

1 pcs.

## ENVIRONMENT

-

## TESTS

-

## CERTIFICATION AND LABELS

UL Certified according to Unites States and Canadian National Standards - Listed

## INSTALLATION INSTRUCTIONS

Instructions document: No. 52-20-002-01

Bulb requirements:

- Socket: E12
- Recommended light source: Silver crown reflector bulb / Half Mirror bulb
- Recommended wattage: 40 W
- Max. Incandescent wattage: Max. 40 W

\*Semi is on delivery supplied with 1 silver crown reflector bulb.

\*US voltage: 120 V

\*Frequency: 60 Hz

\*Supply voltage: AC power -

\*Normally Closed: IP20

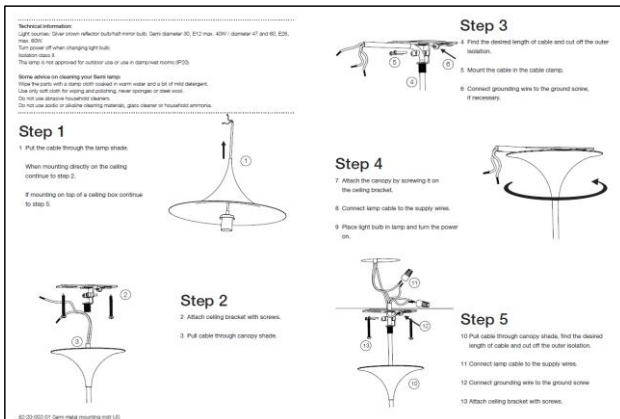
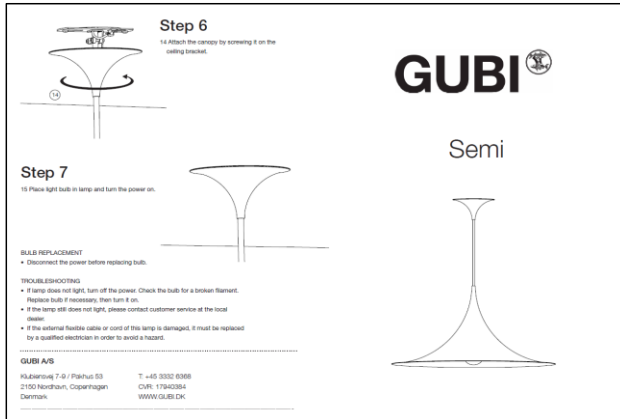


Class II / Double insulated

Mark for Canada and the U.S.



Luminaires accepted for mounting on a flammable base



Designed by Bonderup & Thorup

## PRODUCT



## COLOURS



// Brass



// Chrome



// Copper

Item no.: 004-023XX

+ style code

- 39: Brass
- 40: Chrome
- 46: Copper

## DESCRIPTION

Semi is a unique pendant lamp, based on two quarter-circles put together, back-to-back. It's distinctive arch-shaped shade in lacquered, spun metal creates a diffused, cone-shaped light, ideal over a dining table or kitchen work surface.

## VERSION - SEMI PENDANT Ø47 / SM2

Colour codes are indicative.

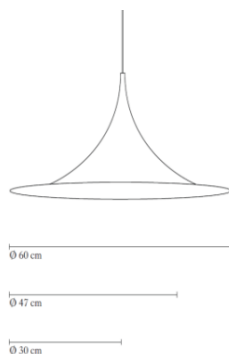
- Fabric wire - Black:
- Brass / White inside // Brass / RAL 9003 // Gloss level shiny / Gloss level 10
- Chrome / White inside // Chrome / RAL 9003 // Gloss level shiny / Gloss level 10
- Copper / White inside // Copper / RAL 9003 // Gloss level shiny / Gloss level 10

## PENDANT VERSION

Order item - look for part number in the pricelist.

Series contains the following:

### SM1, SM2, SM3



## ACCESSORIES

### SILVER CROWN REFLECTOR BULB / HALF MIRROR BULB:

Item no.: 004-99002 60W, E27 base - box of 10 pcs.

## FACTS

### MEASUREMENT - L X W X H inches

- Lamp canopy height: 2,2 inches
- Lamp canopy diameter: 4,5 inches
- Shade height: 9,3 inches
- Shade diameter: dia. 18,5 inches
- Cable length, exposed: APP. 86,6 inches
- Cable length, total: APP. 98,4 inches

### WEIGHT ITEM - LAMP INCL. WIRE AND CANOPY

3,4 lb

### PACKAGING TYPE

Cardboard box

### PACKAGING MEASUREMENT - L X W X H inches

L:19,7 X W:19,7 X H: 11,2 inches

### WEIGHT PACKAGING - MATERIAL TYPE (recyclable)

- Delivery note: 0,2 oz
- PE-LD PolyEthylen, bottom and top: 1,5 oz
- Socket protection: 0,4 oz
- Brown paper post (2 pcs. Triangles and canopy box): 11,2 oz
- PE polybag: 2,2 oz
- Cardboard, outer white box w/5ply Corrugated: 3,9 lb
- Screws: 0,25 oz

### WEIGHT PACKAGING - TOTAL

4,9 lb

### NUMBER OF PARCELS

1 pcs.

## ENVIRONMENT

-

## TESTS

-

## CERTIFICATION AND LABELS

UL Certified according to Unites States and Canadian National Standards - Listed

## INSTALLATION INSTRUCTIONS

Instructions document: No. 52-20-002-01

### Bulb requirements:

- Socket: E26
- Recommended light source: Silver crown reflector bulb / Half Mirror bulb
- Recommended wattage: 60 W
- Max. Incandescent wattage: Max. 60 W

\*Semi is on delivery supplied with 1 silver crown reflector bulb.

\*US voltage: 120 V

\*Frequency: 60 Hz

\*Supply voltage: AC power ~

\*Normally Closed: IP20



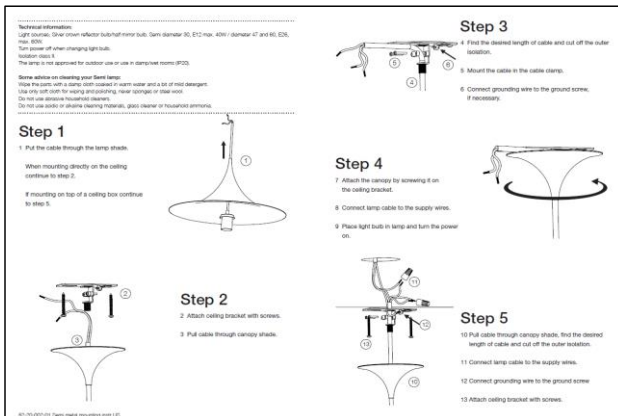
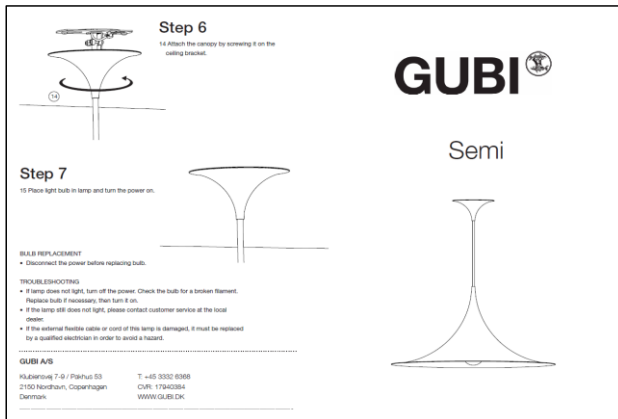
Class II / Double insulated



Mark for Canada and the U.S.



Luminaires accepted for mounting on a flammable base

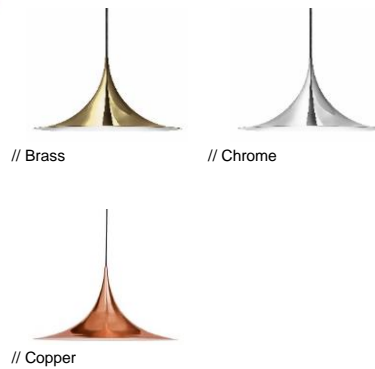


Designed by Bonderup & Thorup

### PRODUCT



### COLOURS



Item no.: 004-033XX  
 + style code  
 - 39: Brass  
 - 40: Chrome  
 - 46: Copper

### DESCRIPTION

Semi is a unique pendant lamp, based on two quarter-circles put together, back-to-back. It's distinctive arch-shaped shade in lacquered, spun metal creates a diffused, cone-shaped light, ideal over a dining table or kitchen work surface.

### VERSION - SEMI PENDANT Ø60 / SM3

Colour codes are indicative.

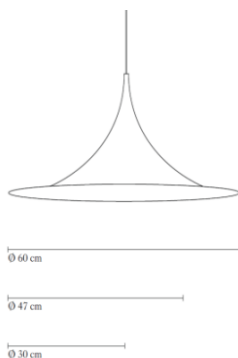
- Fabric wire - Black:
- Brass / White inside // Brass / RAL 9003 // Gloss level shiny / Gloss level 10
- Chrome / White inside // Chrome / RAL 9003 // Gloss level shiny / Gloss level 10
- Copper / White inside // Copper / RAL 9003 // Gloss level shiny / Gloss level 10

### PENDANT VERSION

Order item - look for part number in the pricelist.

Series contains the following:

#### SM1, SM2, SM3



### FACTS

#### MEASUREMENT - L X W X H inches

- Lamp canopy height: 2,2 inches
- Lamp canopy diameter: 4,5 inches
- Shade height: 11,8 inches
- Shade diameter: dia 23,6 inches
- Cable length, exposed: APP. 86,6 inches
- Cable length, total: APP. 98,4 inches

#### WEIGHT ITEM - LAMP INCL. WIRE AND CANOPY

5,3 lb

#### PACKAGING TYPE

Cardboard box

#### PACKAGING MEASUREMENT - L X W X H inches

L:25,2 X W:25,2 X H: 132 inches

#### WEIGHT PACKAGING - MATERIAL TYPE (recycleable)

- Delivery note: 0,2 oz
- PE-LD PolyEthylen, bottom and top: 1,5 oz
- Socket protection: 0,4 oz
- Brown paper post (2 pcs. Triangles and canopy box): 14,1 oz
- PE polybag: 2,2 oz
- Cardboard, outer white box w/5ply Corrugated: 5,7 lb
- Screws: 0,25 oz

#### WEIGHT PACKAGING - TOTAL

7,9 lb

#### NUMBER OF PARCELS

1 pcs.

### ACCESSORIES

#### SILVER CROWN REFLECTOR BULB / HALF MIRROR BULB:

Item no.: 004-99002 60W, E27 base - box of 10 pcs.

## ENVIRONMENT

-

## TESTS

-

## CERTIFICATION AND LABELS

UL Certified according to Unites States and Canadian National Standards - Listed

## INSTALLATION INSTRUCTIONS

Instructions document: No. 52-20-002-01

### Bulb requirements:

- Socket: E26
- Recommended light source: Silver crown reflector bulb / Half Mirror bulb
- Recommended wattage: 60 W
- Max. Incandescent wattage: Max. 60 W

\*Semi is on delivery supplied with 1 silver crown reflector bulb.

\*US voltage: 120 V

\*Frequency: 60 Hz

\*Supply voltage: AC power ~

\*Normally Closed: IP20



Class II / Double insulated



Mark for Canada and the U.S.



Luminaires accepted for mounting on a flammable base

