

Moon Table // Round Coffee Table Ø60x45

Designed by SPACE

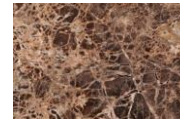
PRODUCT



// Bron/black stained oak



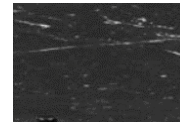
// Grey marble



// Brown marble



// White marble



// Black marble

DESCRIPTION

Space Copenhagen is the designer behind the classic Moon Collection; a series of organic rounded tables for both domestic and public spaces. The interplay between the beautiful solid oak table top and the smooth half – or full moon shaped base, with bevelled surface, creates a simple yet strong identity for the design. The result is an elegant table series with clear references to traditional Danish carpentry.

Through their fascination of the contrast between variations of surfaces and finishes, Space Copenhagen has designed their first table collection for GUBI. The collection spans from small and low round lounge tables in four sizes to three large and generous dining tables.

Table

The table collection consist of round and oval coffee and dining tables. The table is available with matt oil finish or high gloss varnish. The matt oil finish table is blockboard oak that is black stained and oiled. The high gloss varnish has veneered table top.

VERSION

Matt oil finish
High gloss varnish

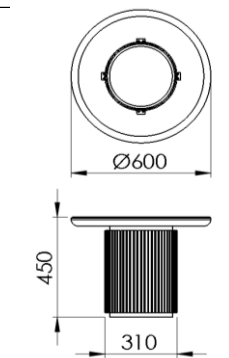
TYPES

Order item - look for part number in the pricelist.
The series consists of the following:

Dinnig Table // H: 73 cm / Table top sizes: 300x105, 260x105, Ø120, Ø150
Coffee Table // H: 45 cm // Table top sizes: 140x70, Ø120, Ø150, Ø60
Lounge Table // H: 55 cm // Table top size: Ø60



MEASUREMENTS



FACTS

MEASUREMENT - H X L X W: MM

Height: 450 mm
Table top: Ø 600 mm
Table top thickness: 40 mm

WEIGHT ITEM (wood top) 17 kg WEIGHT ITEM (marble top) 40 kg

PACKAGING TYPE
Cardboard, MDF, Wood frame

PACKAGING MEASUREMENT - L x W x H CM
70 x 70 x 82 cm

WEIGHT PACKAGING - MATERIAL TYPE

- Delivery note
- Cardboard box
- MDF frame
- Wood frame
- Europallet
- LD-EPE foam protector
- Strapping

WEIGHT TOTAL (wood top) 27 kg WEIGHT TOTAL (marble top) 65 kg

NUMBER OF PARCELS
2 psc.

Moon Table // Round Coffee Table Ø60x45

Designed by SPACE

CLEANING AND MAINTENANCE

For dusting and light cleaning of the woodensurface use a soft, dry cloth.

For further cleaning, use a soft cloth that is firmly wrung in clean water for gently wiping the surface, and then immediately use a dry cloth to wipe the surface again.

Do not use materials for maintenance that:

- Contain abrasive agents.

- Are basic, acidiferous or organic.

For the best maintenance of the product, protect it against sunlight and heat, and try to keep it away from moisture, grease and other dirt.

Furthermore, protect the surfaces against sharp objects and other that might scratch.

Marble cleaning and maintenance - see seperate marble care instructions

ENVIRONMENT

Parts can be separated and sorted for recycling.

TESTS

-

CERTIFICATION AND LABELS

-

Moon Table // Round Coffee Table Ø120x45

Designed by SPACE

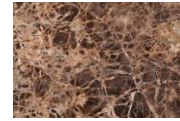
PRODUCT



// Bron/black stained oak



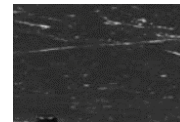
// Grey marble



// Brown marble



// White marble



// Black marble

DESCRIPTION

Space Copenhagen is the designer behind the classic Moon Collection; a series of organic rounded tables for both domestic and public spaces. The interplay between the beautiful solid oak or marble table top and the smooth half – or full moon shaped base, with bevelled surface, creates a simple yet strong identity for the design. The result is an elegant table series with clear references to traditional Danish carpentry.

Through their fascination of the contrast between variations of surfaces and finishes, Space Copenhagen has designed their first table collection for GUBI. The collection spans from small and low round lounge tables in four sizes to three large and generous dining tables.

Table

The table collection consist of round and oval coffee and dining tables. The table is available with brown/black stained oak in matt finish or with a marble top. The mat oil finish table is blockboard oak that is black stained. The high gloss varnish has veneered table top. Marble tops only available in round tops.

VERSION

Brown/black stained oak Matt finish

TYPES

Order item - look for part number in the pricelist.
The series consists of the following:

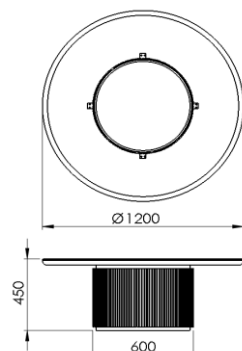
Dinnig Table // H: 73 cm / Table top sizes: 300x105, 260x105, Ø120, Ø150

Coffee Table // H: 45 cm // Table top sizes: 140x70, Ø120, Ø150, Ø60

Lounge Table // H: 55 cm // Table top size: Ø60



MEASUREMENTS



FACTS

MEASUREMENT - H X L X W: MM

Height: 450 mm
Table top: Ø1200 mm
Table top thickness: 40 mm

WEIGHT ITEM (wood top)	WEIGHT ITEM (marble top)
55 kg	145 kg

PACKAGING TYPE
Cardboard, MDF, Wood frame

PACKAGING MEASUREMENT - L x W x H CM
130 x 130 x 82 cm

WEIGHT PACKAGING - MATERIAL TYPE

- Delivery note
- Cardboard box
- MDF frame
- Wood frame
- Europallet
- LD-EPE foam protector
- Strapping

WEIGHT TOTAL (wood top)	WEIGHT TOTAL (marble top)
73 kg	200 kg

NUMBER OF PARCELS
2 psc.

Moon Table // Round Coffee Table Ø120x45

Designed by SPACE

CLEANING AND MAINTENANCE

For dusting and light cleaning of the woodensurface use a soft, dry cloth.

For further cleaning, use a soft cloth that is firmly wrung in clean water for gently wiping the surface, and then immediately use a dry cloth to wipe the surface again.

Do not use materials for maintenance that:

- Contain abrasive agents.

- Are basic, acidiferous or organic.

For the best maintenance of the product, protect it against sunlight and heat, and try to keep it away from moisture, grease and other dirt.

Furthermore, protect the surfaces against sharp objects and other that might scratch.

Marble cleaning and maintenance - see seperate marble care instructions

ENVIRONMENT

Parts can be separated and sorted for recycling.

TESTS

-

CERTIFICATION AND LABELS

-

Moon Table // Round Coffee Table Ø150x45

Designed by SPACE

PRODUCT



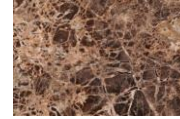
N.B. table top in pictures are Ø120 cm



// Bron/black stained oak



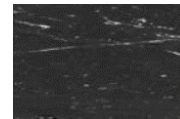
// Grey marble



// Brown marble



// White marble



// Black marble

DESCRIPTION

Space Copenhagen is the designer behind the classic Moon Collection; a series of organic rounded tables for both domestic and public spaces. The interplay between the beautiful solid oak or marble table top and the smooth half – or full moon shaped base, with bevelled surface, creates a simple yet strong identity for the design. The result is an elegant table series with clear references to traditional Danish carpentry.

Through their fascination of the contrast between variations of surfaces and finishes, Space Copenhagen has designed their first table collection for GUBI. The collection spans from small and low round lounge tables in four sizes to three large and generous dining tables.

Table

The table collection consist of round and oval coffee and dining tables. The table is available with brown/black stained oak in matt finish or with a marble top. The mat oil finish table is blockboard oak that is black stained. The high gloss varnish has veneered table top. Marble tops only available in round tops.

VERSION

Brown/black stained oak Matt finish

TYPES

Order item - look for part number in the pricelist.
The series consists of the following:

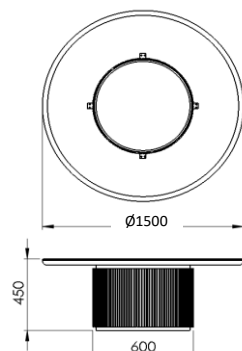
Dinnig Table // H: 73 cm / Table top sizes: 300x105, 260x105, Ø120, Ø150

Coffee Table // H: 45 cm // Table top sizes: 140x70, Ø120, Ø150, Ø60

Lounge Table // H: 55 cm // Table top size: Ø60



MEASUREMENTS



FACTS

MEASUREMENT - H X L X W: MM

Height: 450 mm
Table top: Ø1500 mm
Table top thickness: 40 mm

WEIGHT ITEM (wood top)	WEIGHT ITEM (marble top)
75 kg	210 kg

PACKAGING TYPE
Cardboard, MDF, Wood frame

PACKAGING MEASUREMENT - L x W x H CM
160 x 160 x 82 cm

WEIGHT PACKAGING - MATERIAL TYPE

- Delivery note
- Cardboard box
- MDF frame
- Wood frame
- Europallet
- LD-EPE foam protector
- Strapping

WEIGHT TOTAL (wood top)	WEIGHT TOTAL (marble top)
97 kg	275 kg

NUMBER OF PARCELS
2 psc.

Moon Table // Round Coffee Table Ø150x45

Designed by SPACE

CLEANING AND MAINTENANCE

For dusting and light cleaning of the woodensurface use a soft, dry cloth.

For further cleaning, use a soft cloth that is firmly wrung in clean water for gently wiping the surface, and then immediately use a dry cloth to wipe the surface again.

Do not use materials for maintenance that:

- Contain abrasive agents.

- Are basic, acidiferous or organic.

For the best maintenance of the product, protect it against sunlight and heat, and try to keep it away from moisture, grease and other dirt.

Furthermore, protect the surfaces against sharp objects and other that might scratch.

Marble cleaning and maintenance - see seperate marble care instructions

ENVIRONMENT

Parts can be separated and sorted for recycling.

TESTS

-

CERTIFICATION AND LABELS

-