

Chairs

# Supernova

The Supernova chair with its curved back is almost an armchair in its refinement, comfort and ability to accommodate those who sit. It belongs to a family, designed by Signorotto&Partners, cast in the refined and orderly atmosphere of the 1930s.



## THE ELEGANCE OF METAL LEGS

In the Supernova chair, the rational lines of the metal rod legs, with rounded heads, rise up to the minimal and elegant sides. There they accommodate and support the backrest and leave the scene for the soft seat.



## QUALITY DETAILS

In the Supernova chair, the two parts that make up the seat are upholstered separately and then assembled to ensure a snug fit. You can choose it in fabric, leather or eco-leather, even with different back and front materials and finishes.



# FINISHES

With different front and back for the Supernova chair, you can play with fabric/fabric, fabric/eco-leather, fabric/woven eco-leather, or eco-leather/woven eco-leather.

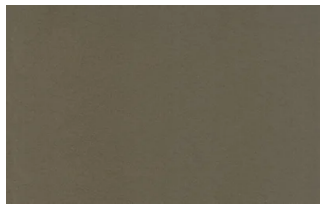
## Metals

### METALS 1

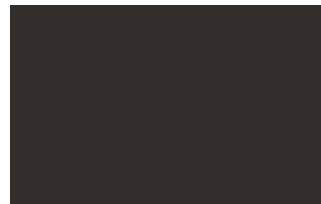
Metals 1



Black



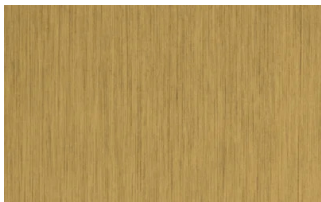
Titanium



Brown

### METALS 2

Metals 2



Antiqued brass

## Fabrics

### BASIC

X370



3



4



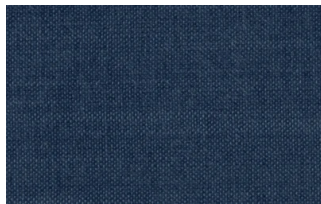
9



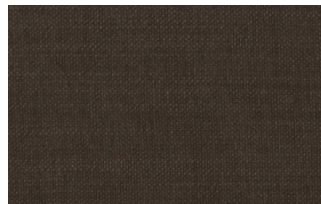
10



23

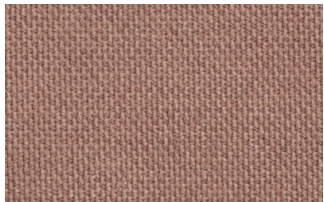


29

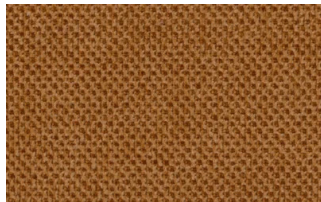


32

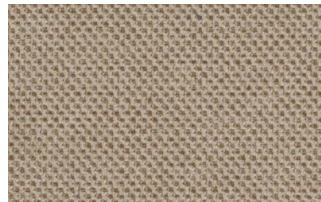
## Relax



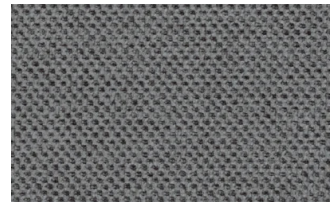
5



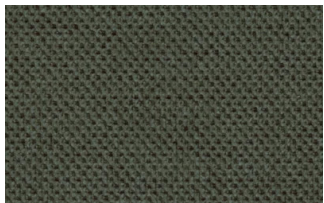
20



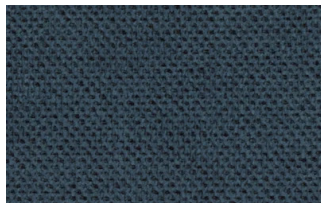
25



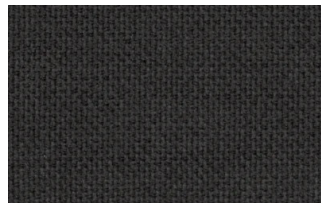
53



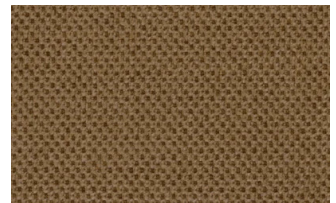
62



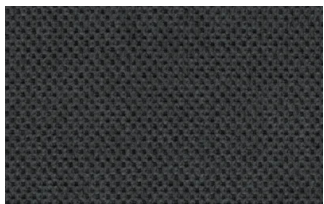
66



74



81

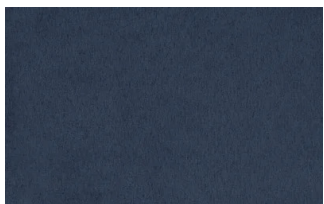


96

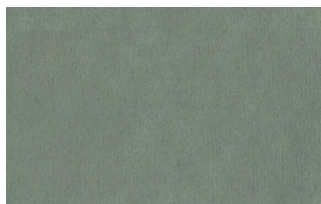


103

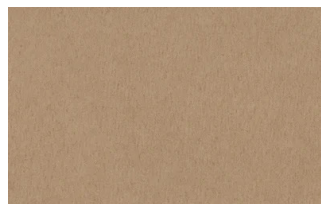
## Divina



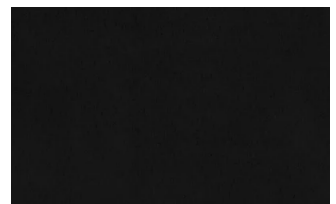
15



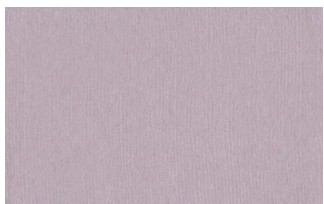
19



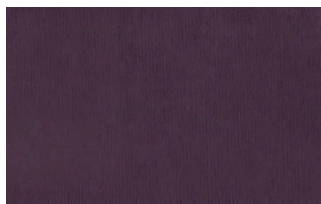
21



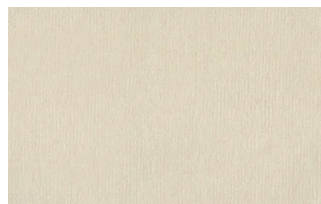
22



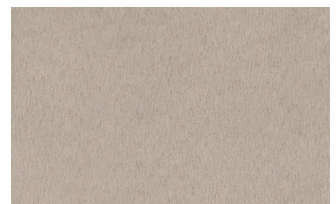
34



46



49



50



76



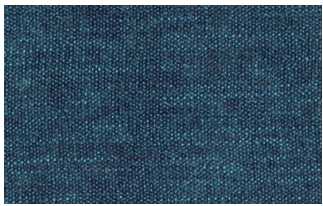
88



561

## START

### Scoop



6



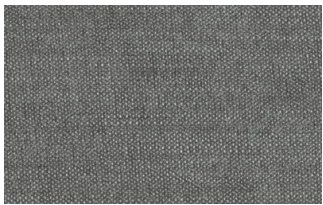
7



9



25



31



59



104

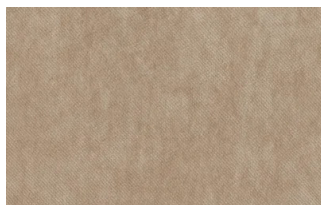


561

### Stropiccio



4



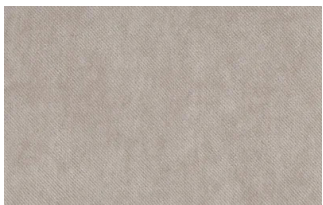
6



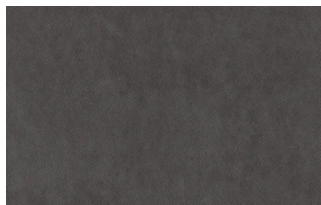
8



17



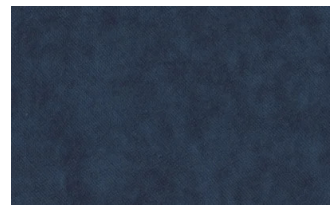
19



20



22

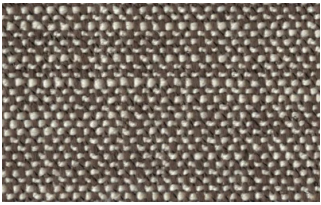


23

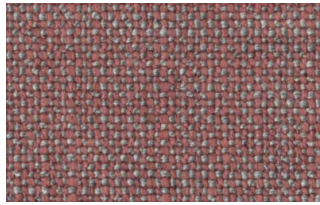


30

### Nodone



1302



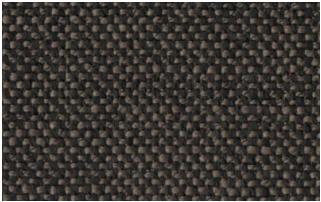
1307



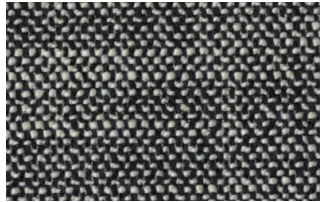
1308



1309



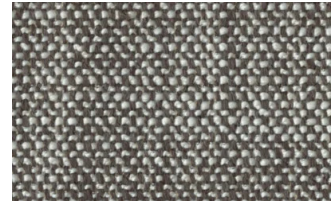
1310



1311

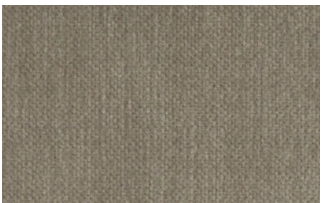


1313

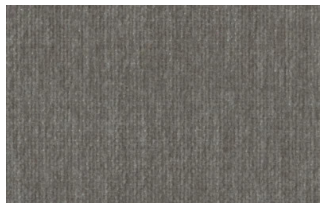


1314

## R Flair



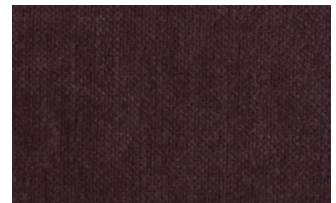
P321-6200-039



P321-6200-901



P321-6300-419



P321-6300-503



P321-6300-988



P321-6300-996

## EXTRA

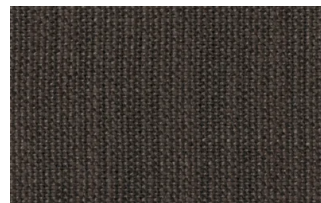
### Anice



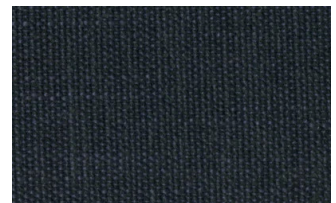
1



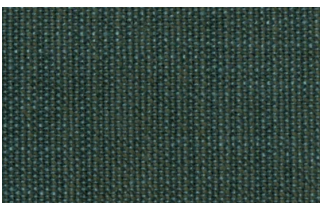
2



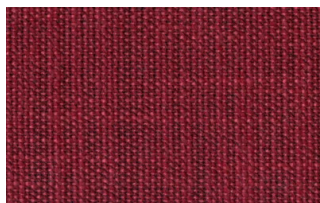
3



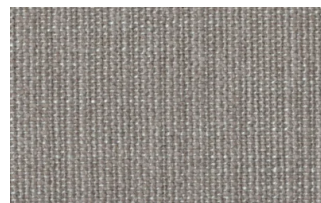
4



5



6



7

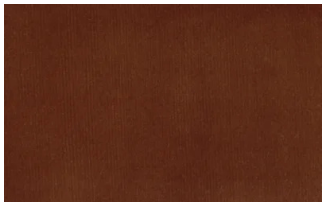


8

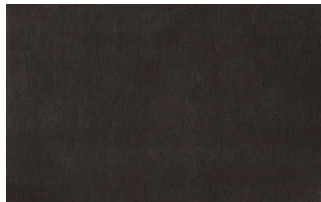


9

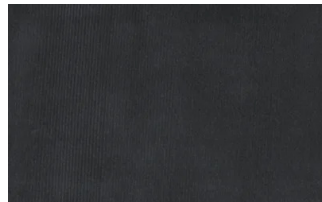
## Lovely



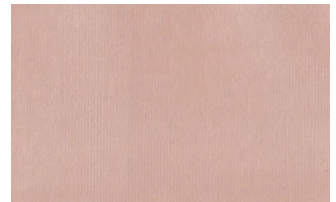
6



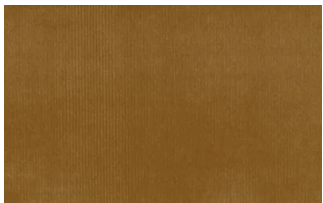
10



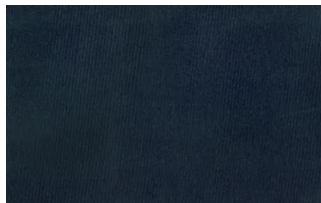
19



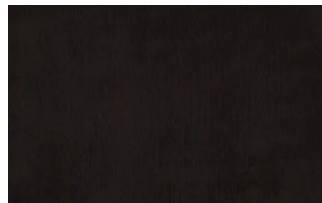
22



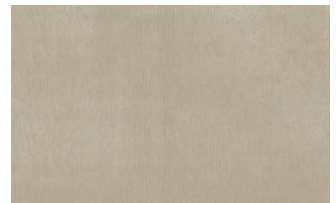
27



31



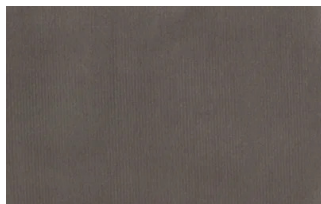
36



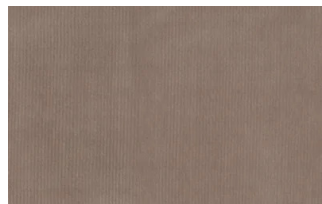
102



113



200

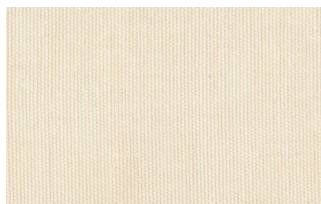


202

## Cosme



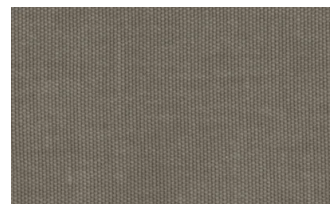
e200



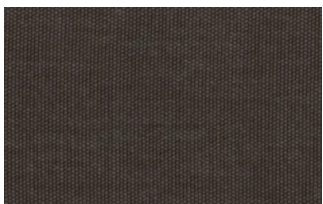
e202



e205



e206



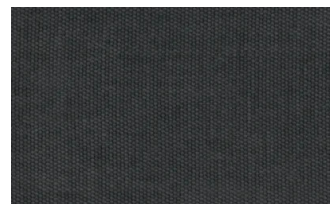
e209



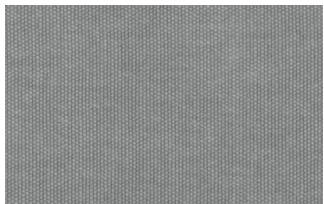
e220



e232



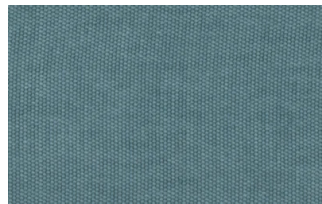
e234



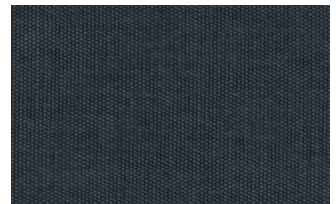
e236



e240

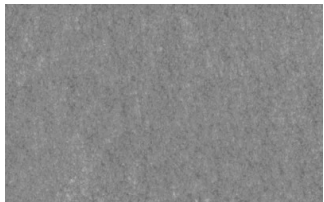


e241

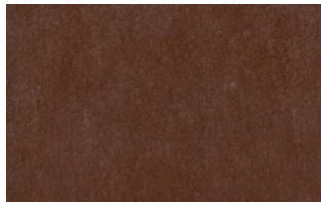


e244

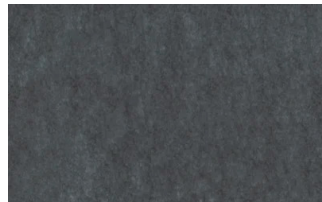
## Soda



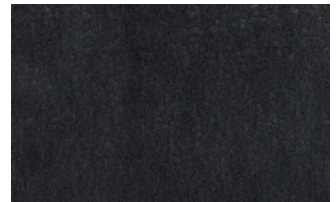
29



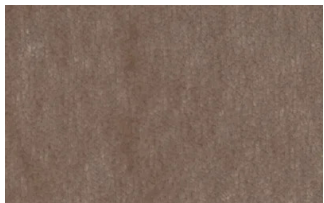
30



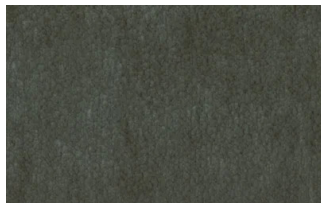
39



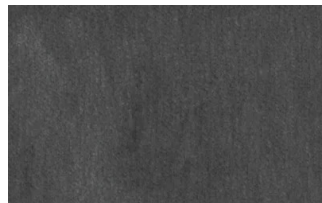
41



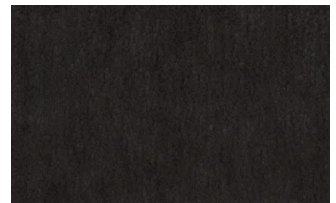
56



62



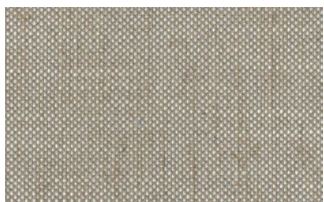
74



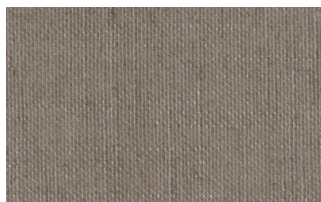
104

## LIGHT

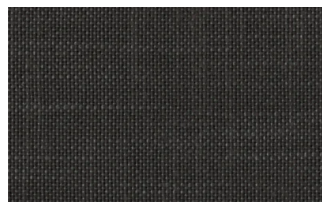
### Lima



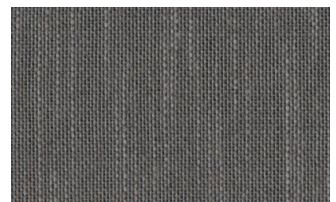
2



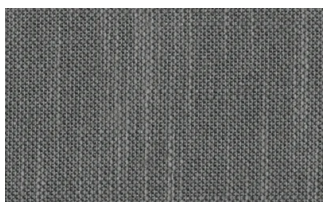
5



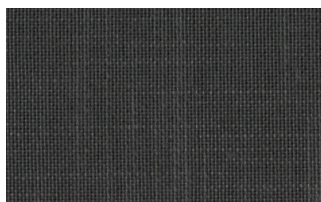
10



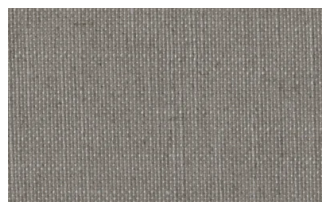
12



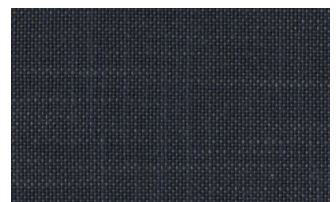
14



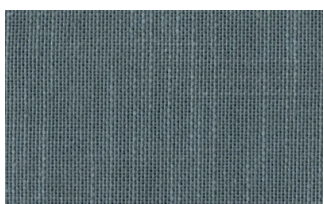
16



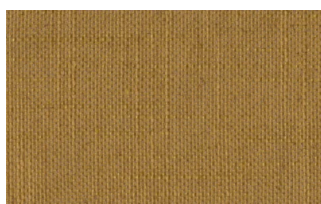
23



29



31



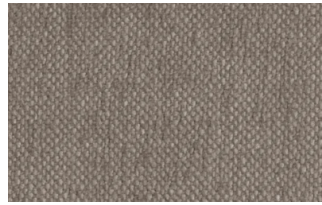
43

### Mimi





A3004



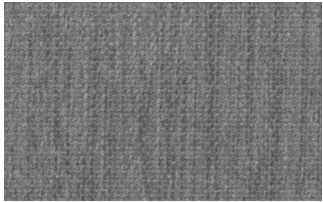
A3005



A3006



A3014



A3018

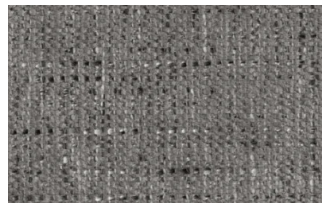


A3023

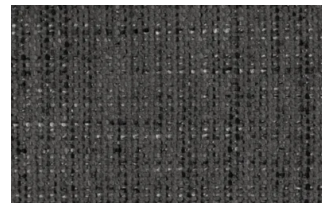
## Memphis



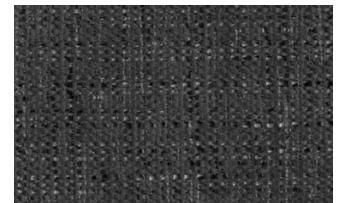
1



6



10



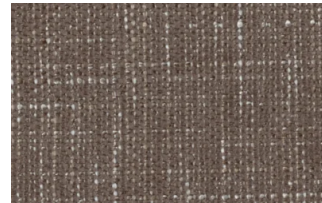
11



13



14



15



16

## SUPER

### Hylemt



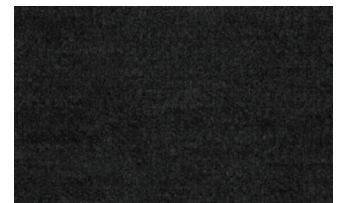
25



102



109



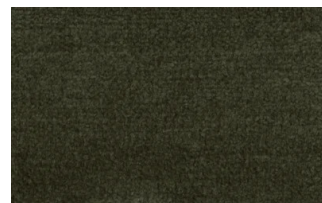
117



121



204



207

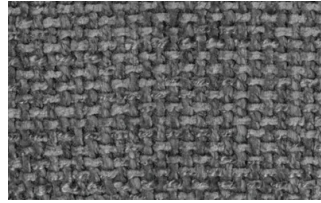
### Axum



3



11



12



18



21



23



29

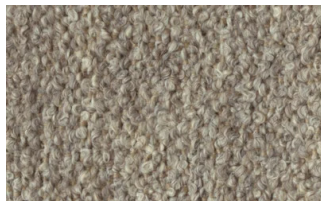


30

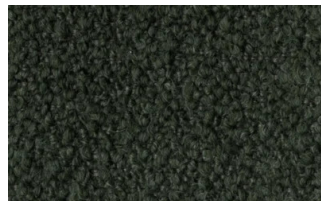
## Barnum Unito



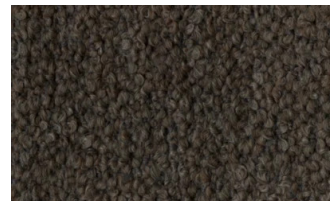
1 bianco



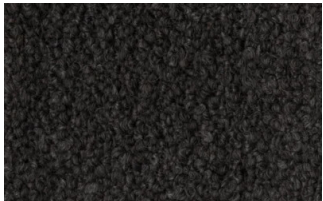
2 corda



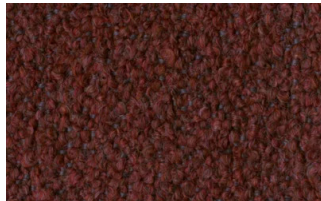
9 bosco



10 piombo



13 lavagna



23 bruciato

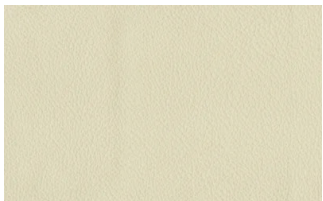


24 lana

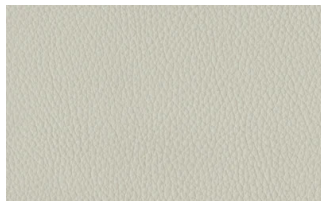
## Leathers

### K LEATHERS

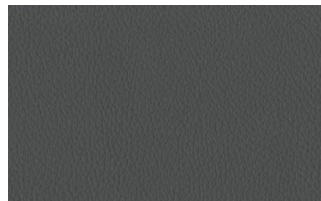
#### Leather



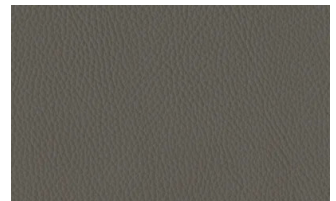
200



202



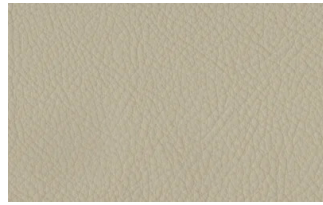
204



206



207



208



211



214



217



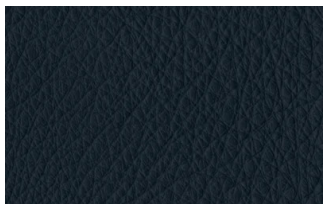
224



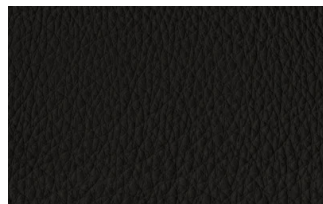
228



234



274



298



301

## W LEATHERS

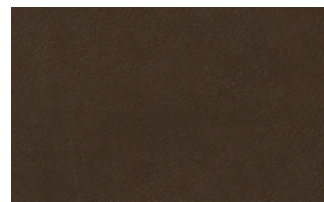
### Nabuk



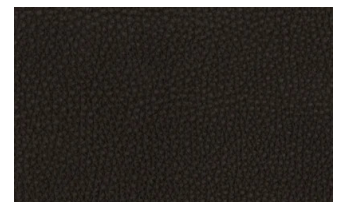
Creta



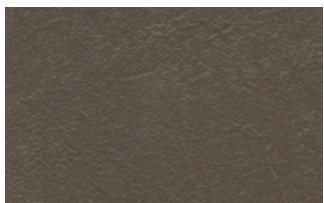
Camel



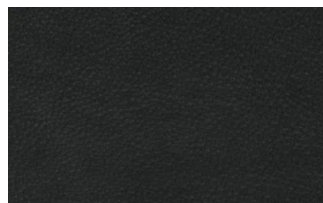
marrone



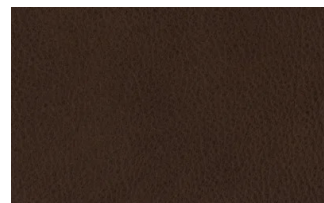
Testa di moro



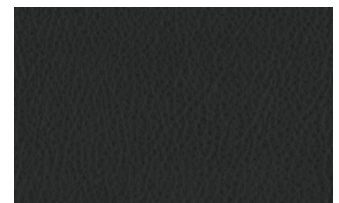
Seppia



Black



Hard leather



Grigio

## Ecoleathers

## EXTRA ECO-LEATHERS

### Vintage eco-leather



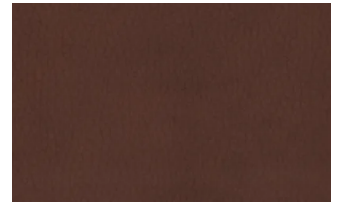
2



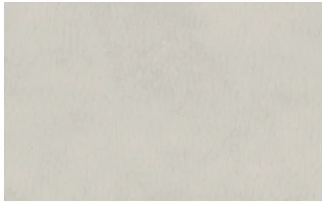
3



3 intreccio



4



6



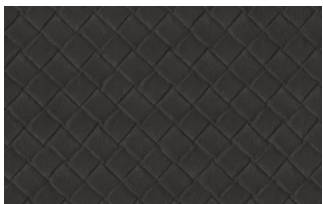
7



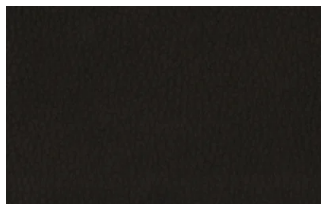
7 intreccio



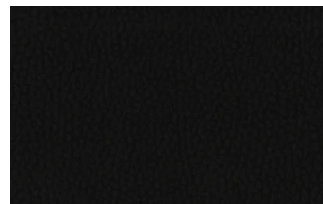
8



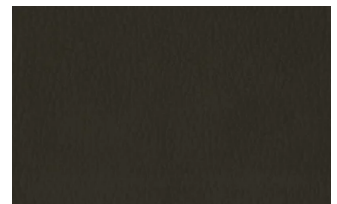
8 intreccio



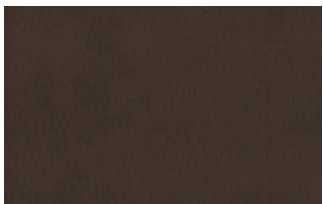
9



14



19



22