

Bedroom sets

# Settanta



The Settanta night storage units have a design with rounded lines and a refined flavour thanks to their refined workmanship and finishes. Stoneware, wood, leather and eco-leather, simple or in woven versions, stimulate the touch. The workmanship tells of the craftsmanship know-how that has nurtured Dall'Agnese from the very beginning.



## SETTANTA NIGHT STANDS, CHESTS OF DRAWERS AND TALL UNITS

The wooden structure, with integrated feet, of the Settanta night storage units is enveloped by a eco-leather shell that perfectly finishes it at the back. You can therefore also use this furniture in the centre of the room. The flat top can be made of stoneware or wood; in the tray version, only wood. The handles are made to measure in hard leather, in the different finishes found in the relevant Dall'Agnese colour chart.



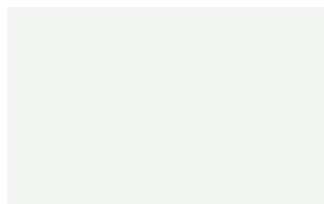
# FINISHES

Discover all the finishes available for the Settanta night storage units, from the woods of the structure to the eco-leather, also woven, of the shell, from the hard leather handles to the stoneware or wood tops.

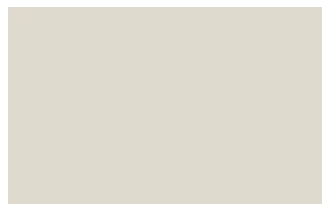
## Lacquers

### MATT LACQUERS

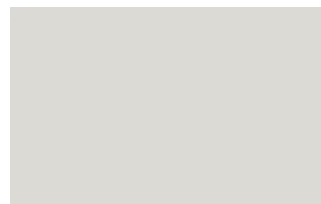
#### Matt lacquers



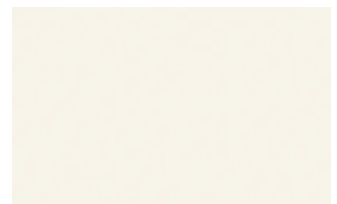
Bianco



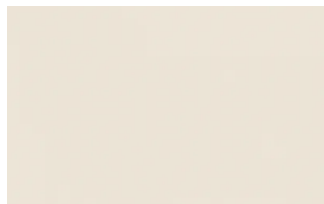
Ghiaccio



Sabbia



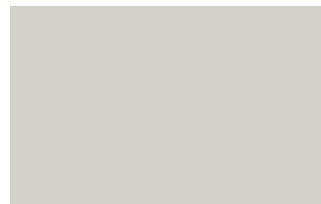
Panna



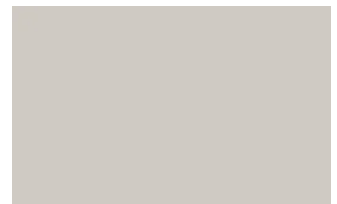
Crema



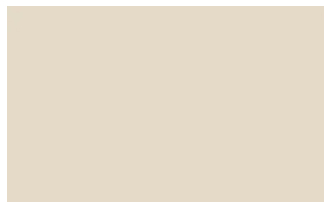
Grigio seta



Grigio perla



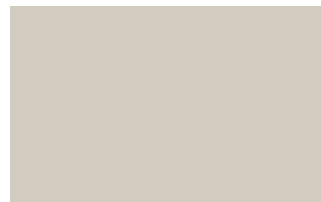
Light grey



Fior di loto



Giallo senape



Tortora



Canapa



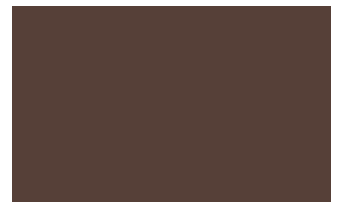
Corda



Dark grey



Terracotta



Moka



Rosso bordeaux



Rosso



Rosa cipria



Bruciato



Carta da zucchero



Grigio blu



Verde pallido



Verde malva



Grigio aston



Celeste



Turchese



Grigio Garda



Blu cobalto



Oceano



Grigio antracite

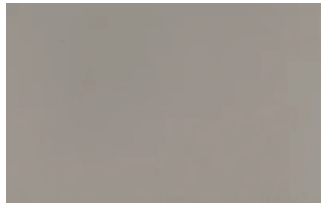


Nero

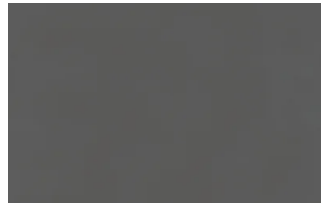
## Metallic matt lacquers



Titanio



Nichel



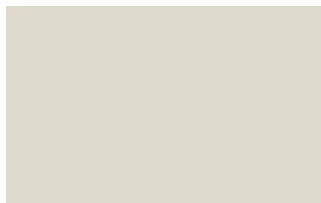
Piombo

## GLOSSY LACQUERS

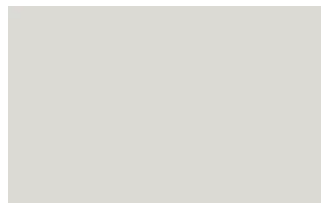
### Glossy lacquers



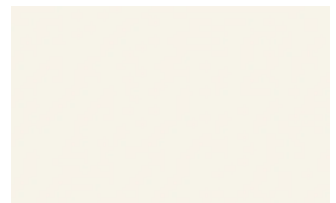
Bianco



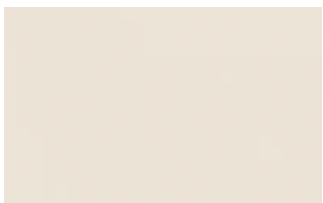
Ghiaccio



Sabbia



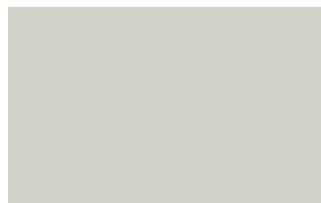
Panna



Crema



Grigio seta



Grigio perla



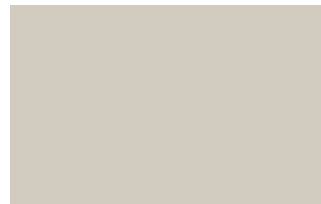
Light grey



Fior di loto



Giallo senape



Tortora



Canapa



Corda



Dark grey



Terracotta



Moka



Rosso bordeaux



Rosso



Rosa cipria



Bruciato



Carta da zucchero



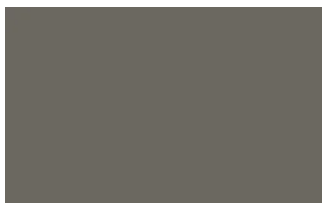
Grigio blu



Verde pallido



Verde malva



Grigio aston



Celeste



Turchese



Grigio Garda



Blu cobalto



Oceano



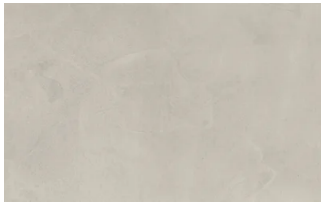
Grigio antracite



Black

## UP SURFACES

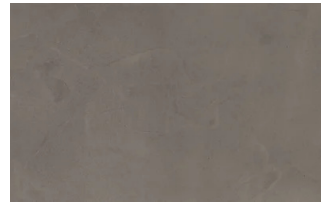
Concrete effect lacquers



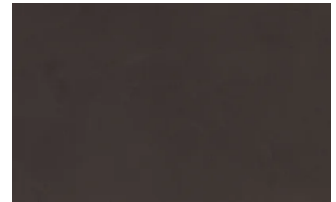
Perla



Argilla

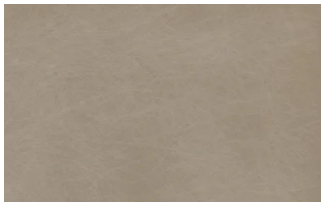


Grafite



Lava

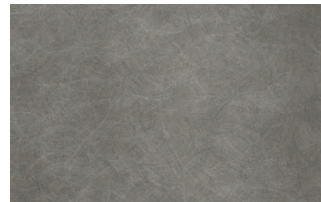
## Metal effect lacquers



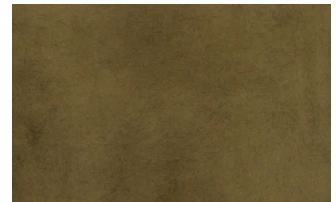
Nichel



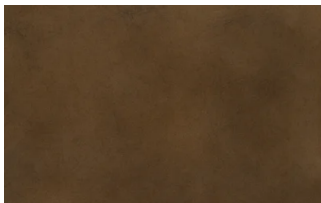
Piombo



Titanio



Ossido ottone



Ossido bronzo

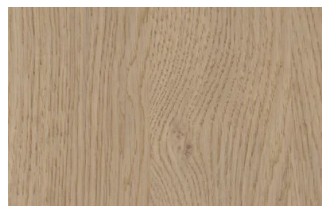
## Woods

### WOODS 1

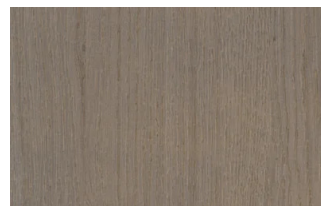
#### Woods 1



Natural oak



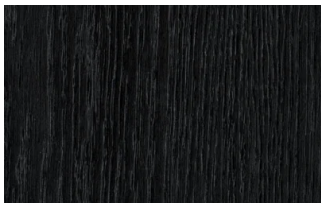
Oak visone



Oak cenere



Oak castoro



Oak carbone

### WOODS 2

#### Woods 2



Canaletto walnut

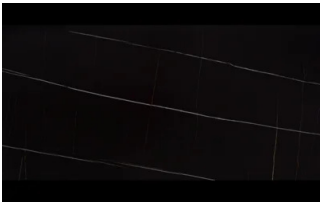


Heat-treated oak

## Stoneware

### STONEWARE

#### Matt stoneware



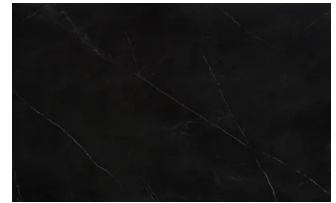
Azalai nero



Jasper moka



Storm grigio



Storm nero

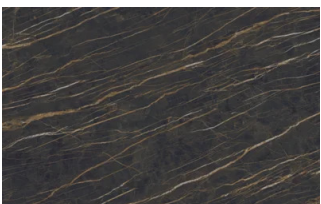


Senda grigio

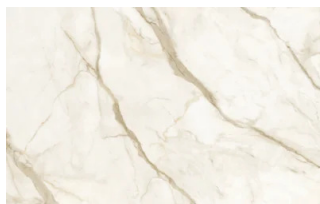


Pacific bianco

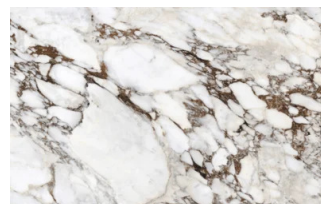
#### Glossy stoneware



Noir desir



Calacatta oro



Breche capraia

## Textured finishes

### TEXTURED FINISHES

#### Textured finishes



Heat-treated oak



Avana



Oak carbone



pietra piacentina

## Ecoleathers

### EXTRA ECO-LEATHERS

#### Vintage eco-leather



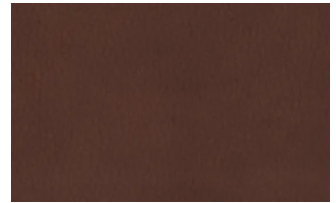
2



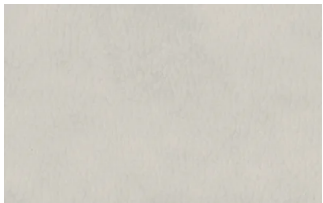
3



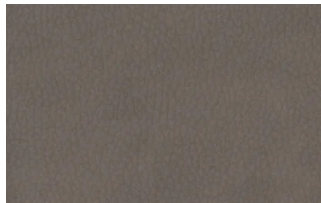
3 intreccio



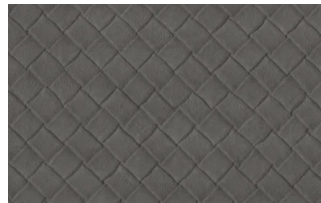
4



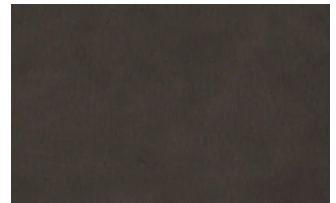
6



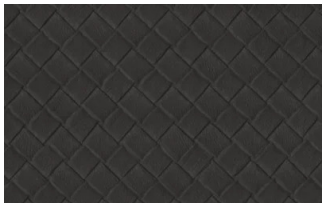
7



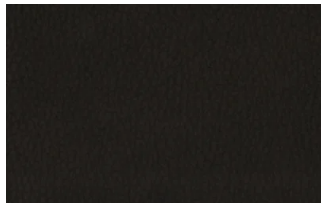
7 intreccio



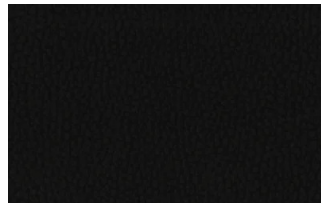
8



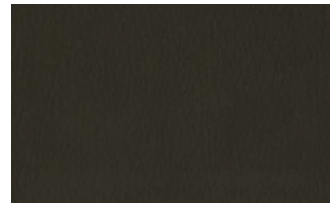
8 intreccio



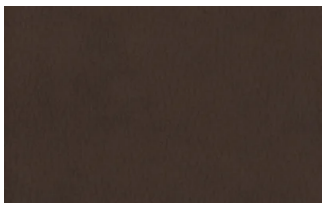
9



14



19



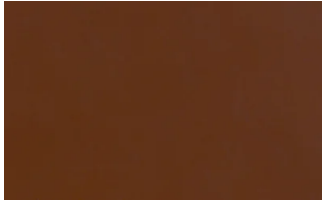
22

## Hard leathers



## HARD LEATHERS

Hard leathers



naturale



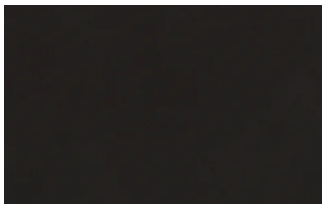
Beige



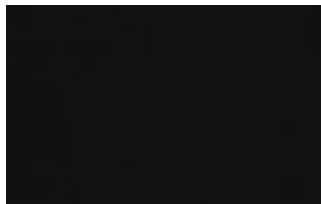
Corda



Grigio



Testa di moro



Black